

PHYSIOTHERAPY

**EQUIPMENT
MANUFACTURER**

Gmail: sigmamedicaresystems@gmail.com

PH: 9176282421, 9498082830, 044-48652421

SIGMAMEDICARESYSTEMS

Gmail: sigmamedicareystems@gmail.com



MMA
E FOR MANKIND

SIGMAMEDICARESYSTEMS

Gmail: sigmamedicareystems@gmail.com



SIGMA MEDICARE SYSTEMS

No 9/1Kampar Salami Kulakkarai North Street .Ramapuram, Chennai-600089

E-Mail: sigmamedicareystems@gmail.com

Web: www.sigmamedicareystems.com

PH: +91-44-48652421, 91-0-9176282421, 9498082830

MADE FOR MANKIND

ELECTRO THERAPY

1. Interferential Therapy



Specification:-

- ❖ **Microcontroller Based**
- ❖ **STM Microcontroller**
- ❖ **Medium frequency 2KHz, 4KHz, 6KHz, 8KHz and 10KHz**
- ❖ **RUSSION current (2500Hz sine wave)**
- ❖ **Multi vector (4 Type of Vectors)**
- ❖ **Separate display for CH1 and CH2**

- ❖ **LED Indicators for Stimulation to the Patient for CH1 and CH2**
- ❖ **TENS Mode**
- ❖ **Built-in Patient Safety Circuit**
- ❖ **Digital Treatment Timer**
- ❖ **Compact Size(Weight : 2.5 Kg)**
- ❖ **Available in with Battery (1 Hour Backup) & Without Battery**



1. B .Computerized Digit Interferential Therapy



Specification:-

- a. SMPS Power Supply
- b. Medium frequency 2KHz,4KHz,6KHz,8KHz and 10KHz.
- c. Patient safety: Output is 100% isolation
- d. 150 pre programmed
- e. 100 user memory with patient name
- f. Russian – 10msec ON/10msec OFF)
- g. Large Size crystal clear bluish graphic LCD 64X128
- h. Light Weight

Russian Current:

Output : 2500Hz Sine wave
Choice of ON Time: 5m sec.,
10 m sec., 15 m sec.,&20 m sec.
Choice Of OFF Time: 5 m sec.,
10 m sec., 15 m sec & 20 m sec

2. Interferential Therapy Compact



Specification:-

- ❖ SMPS Power supply
- ❖ Medium frequency 2KHz, 4KHz, 6KHz, 8KHz and 10KHz
- ❖ RUSSION current (2500Hz sine wave)
- ❖ Multi vector (4 Type of Vectors)
- ❖ Separate display for CH1 and CH2
- ❖ LED Indicators for Stimulation to the Patient for CH1 and CH2
- ❖ TENS Mode
- ❖ Built-in Patient Safety Circuit
- ❖ Digital Treatment Timer
- ❖ Compact Size(Weight : 2.5 Kg)
- ❖ Available in with Battery (1 Hour Backup) & Without Battery

3. A Ultrasound Therapy 1MHz



Specification:-

- ❖ **Microcontroller Based**
- ❖ **PIC Microcontroller**
- ❖ **Digital O/P Meter**
- ❖ **Digital Treatment timer**
- ❖ **Five Different O/P Mode (1Cont. Pulsed 1:2, 1:4, 1:8, 1:16)**
- ❖ **Output Frequency 1 MHz**
- ❖ **Transducer and Patient Safety Circuit**
- ❖ **Compact Size**
 - **Light Weight – 1.5 Kg Only**
- ❖ **Available in with Battery (1 Hour Backup) & Without Battery**

3. B. Ultrasound Therapy 1MHz



Specification:-

- ❖ **Microcontroller Based**
- ❖ **PIC Microcontroller**
- ❖ **Digital O/P Meter**
- ❖ **Digital Treatment timer**
- ❖ **Five Different O/P Mode (1Cont. Pulsed 1:2, 1:4, 1:8, 1:16)**
- ❖ **Output Frequency 1 MHz**
- ❖ **Transducer and Patient Safety Circuit**
- ❖ **Compact Size**
 - Light Weight – 1.5 Kg Only**
- ❖ **Available in with Battery (1 Hour Backup) & Without Battery**

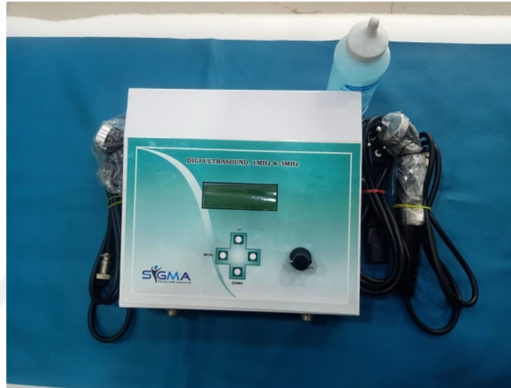
3. C. Digit Ultrasound Therapy 1MHz



Specification:-

- ❖ **Microcontroller Based**
- ❖ **PIC Microcontroller**
- ❖ **Digital O/P Meter**
- ❖ **Digital Treatment timer**
- ❖ **Five Different O/P Mode (1Cont. Pulsed 1:2, 1:4, 1:8, 1:16)**
- ❖ **Output Frequency 1 MHz**
- ❖ **Transducer and Patient Safety Circuit**
- ❖ **Compact Size**
 - Light Weight – 1.5 Kg Only**
- ❖ **Available in with Battery (1 Hour Backup) & Without Battery**

3. D. Digit Ultrasound Therapy 1MHz & 3 MHz



Specification:-

- ❖ **Microcontroller Based**
- ❖ **PIC Microcontroller**
- ❖ **75 Free Program**
- ❖ **Digital O/P Meter**
- ❖ **Digital Treatment timer**
- ❖ **Five Different O/P Mode (1Cont. Pulsed 1:2, 1:4, 1:8, 1:16)**
- ❖ **Output Frequency 1 MHz**
- ❖ **Transducer and Patient Safety Circuit**
- ❖ **Compact Size**
 - Light Weight – 1.5 Kg Only**
- ❖ **Available in with Battery (1 Hour Backup) & Without Battery**

4. Ultrasound Therapy Unit: Compact Size



Specification:-

- Microcontroller Based**
- ❖ **PIC Microcontroller**
- ❖ **Digital O/P Meter**
- ❖ **Digital Treatment timer**
- ❖ **Five Different O/P Mode (1Cont. Pulsed 1:2, 1:4, 1:8, 1:16)**
- ❖ **Output Frequency 1 MHz**
- ❖ **Transducer and Patient Safety Circuit**
- ❖ **Compact Size**
- ❖ **Light Weight – 750 g**

5. Electronic Cervical & Lumber Traction Unit: With Following Features



Specification:-

- ❖ **Digital treatment timer**
- ❖ **Separate Traction force for CERVICAL&LUMBER.**
- ❖ **Traction force for CERVICAL 4 Kg's to 15 Kg's**
- ❖ **(1Kg steps) for LUMBAR 20 Kg's to 45Kg's**
- ❖ **(2 Kgs steps) with Doubles up to 90 Kg's**
- ❖ **LED Indicator for HOLD & REST time**
- ❖ **Patient Safety Switch**
- ❖ **Hold time 10,20,40,60 and 80 Sec**
- ❖ **Rest time 1,5,10,15,20 Sec**

5. A Triton DTS® Unit – Overview

Specification:-

- ❖ **5 DTS Pull Patterns to mimic the manual traction**
 - **therapy experience**

- ❖ **Highly customizable traction unit to meet**
 - **Therapeutic objectives**

- ❖ **Four phases of traction**
- ❖ **Pretension**
- ❖ **Progression**
- ❖ **Treatment**
- ❖ **Traction**
- ❖ **Regression**

Pretension phase to ease muscle



6. Muscle Stimulator Unit – Therapeutic



Specification:-

- ❖ **Therapy mode: G, IG, F, & SF**
- ❖ **Pulse duration: 0.01, 0.03, 0.1, 0.3, 1, 3, 10, 100**
- ❖ **Pulse Rest Time: 1-6 sec**
- ❖ **Visual Indicator: G, IG, F, & SF**
- ❖ **Faradic Frequency: 50Hz/0.7m sec**
- ❖ **Surge Duration: 1-6 sec**
- ❖ **Surge Rest Time: 16 sec**
- ❖ **Power supply: SMPS ,100-275AC/50Hz operating range**
 - **Available in with Battery (1 Hour Backup) & Without Battery**

7. Muscle Stimulator Therapeutic – Compact (Light Weight)

Specification:-

- ❖ **Therapy mode: G, IG, F, & SF**
- ❖ **Pulse duration: 0.01, 0.03, 0.1, 0.3,1, 3,10,100**
- ❖ **Pulse Rest Time: 1-6 sec**
- ❖ **Visual Indicator: G, IG, F, & SF**
- ❖ **Faradic Frequency:50Hz/0.7m sec**
- ❖ **Surge Duration:1-6 sec**
- ❖ **Surge Rest Time: 16 sec**
- ❖ **Power supply: SMPS ,100-275AC/50Hz operating range**
- ❖ **Weight: 750g**
 - **Available in with Battery (1 Hour Backup) & Without Battery**

8. Muscle Stimulator Unit – Diagnostic



Specification:-

- ❖ **Therapy mode: G,IG,F, and SF**
- ❖ **Pulse duration:0.01,0.03,0.1,0.3,1,3,10,100**
- ❖ **Pulse Rest Time: 1-6 sec**
- ❖ **Visual Indicator : G, IG, F, & SF**
- ❖ **Faradic Frequency: 50hz/0.7 m sec**
- ❖ **Surge Duration: 1-6 sec**
- ❖ **Surge Rest Time:16 sec**
- ❖ **3 digit digital display meter available**
 - **Available in with Battery (1 Hour Backup) & Without Batter**

9. Muscle Stimulator Diagnostic – Compact (Light Wight)



Specification:-

- ❖ **Therapy mode: G,IG,F, and SF**
- ❖ **Pulse duration:0.01,0.03,0.1,0.3,1,3,10,100,300 and 1000 ms**
- ❖ **Pulse Rest Time: 1-6 sec**
- ❖ **Visual Indicator : G, IG, F, & SF**
- ❖ **Faradic Frequency: 50hz/0.7 m sec**
- ❖ **Surge Duration: 1-6 sec**
- ❖ **Surge Rest Time:16 sec**
- ❖ **3 digit digital display meter available**
- ❖ **Available in With Battery (1 Hour Backup) & without Battery**

10. TENS Major – Four Channel with Digital timer and Patient Safety Circuit



Specification:-

- ❖ **Frequency: up to 150 Hz**
- ❖ **Pulse width: 400 Micro sec**
- ❖ **Therapy Mode: All channels continuous**
 - **All channels – individual continuous/burst mode**
- ❖ **Surge & Rest time can be varied from 1 to 15 seconds**
- ❖ **Output: 4 channel**
- ❖ **Parameter selection: Manual**
- ❖ **Intensity: 0-140 V Linear Adjustment**

- ❖ **Patient safety: output is 100% isolation**
- ❖ **Power supply: SMPS ,100-275AC/50Hz operating range**
- ❖ **Intensity can be adjust for ch1, ch2, ch3 and ch4 separately**
- ❖ **Available in With Battery (1 Hour Backup) & Without Battery**

11. Packet Tens



Specification:-

- ❖ **Frequency : up to 150 Hz**
- ❖ **Pulse width : 400 Micro seconds**
- ❖ **Continuous/Burst Mode**
- ❖ **Digital timer 1 to 15 minutes adjustable**
- ❖ **SMPS Power Supply @ 100V – 275V AC, 50Hz**

12. Combo-IFT+US



Specification:-

- ❖ SMPS Power supply
- ❖ Medium frequency 2KHz, 4KHz, 6KHz, 8KHz and 10KHz
- ❖ RUSSION current (2500Hz sine wave)
- ❖ Multi vector (4 Type of Vectors)
- ❖ Separate display for CH1 and CH2
- ❖ LED Indicators for Stimulation to the Patient for CH1 and CH2
- ❖ TENS Mode

- ❖ **Built-in Patient Safety Circuit**
- ❖ **Digital Treatment Timer**
- ❖ **Compact Size(Weight : 2.5 Kg)**

- ❖ **SMPS Power Supply**
- ❖ **Digital O/P Meter**
- ❖ **Digital Treatment timer**
- ❖ **Five Different O/P Mode (1Cont. Pulsed 1:2, 1:4, 1:8, 1:16)**
- ❖ **Output Frequency 1 MHz**
- ❖ **Transducer and Patient Safety Circuit**
- ❖ **Compact Size**

13. Combo – MST + Ultra-Rays + TENS DUAL (SMPS, Compact Size and Light Weight)



Specification:-

- ❖ **U-REIZ**
- ❖ **On Time : 2 ms**
- ❖ **OFF Time : 5 ms**
- ❖ **Output Intensity : 0 – 160V adjustable**
 - **Refer : Stimulator + TENS specification.**
 - **Light Weight : 1.5 Kg**
- ❖ **Available in With Battery (1 Hour Backup) & Without Battery**

14. Combo – MST + TENS DUAL (SMPS,

Compact Size and Light Weight)



Specification:-

- ❖ **Therapy mode: G, IG, F, & SF**
- ❖ **Pulse duration: 0.01, 0.03, 0.1, 0.3, 1, 3, 10, 100**
- ❖ **Pulse Rest Time: 1-6 sec**
- ❖ **Visual Indicator: G, IG, F, & SF**
- ❖ **Faradic Frequency: 50Hz/0.7m sec**
- ❖ **Surge Duration: 1-6 sec**
- ❖ **Surge Rest Time: 16 sec**
- ❖ **Power supply: SMPS, 100-275AC/50Hz operating range**
 - Available in with Battery (1 Hour Backup) & Without Battery

- ❖ **Frequency : up to 150 Hz**
- ❖ **Pulse width : 400 Micro seconds**
- ❖ **Continuous/Burst Mode**
- ❖ **Digital timer 1 to 15 minutes adjustable**
 - SMPS Power Supply @ 100V – 275V AC, 50Hz

15. Continuous passive motion system (computerized) –with specification



Specification:-

❖ **Motor shop & reversible**

: High torque noiseless instant start-

- ❖ **Flexion Angle** : **0* - 120***
- ❖ **Machine Speed** : **Approximately 1.5 minutes for one stroke from extension to flexion to extension**
- ❖ **Adjustable** : **Thigh length & height**
 - **Treatment time** : **Variable from 5 minutes to 30 minutes**

16. Shortwave Diathermy 300W (811 A valve) – Digital Timer, Pulsed & Cont. with Pad Electrodes



Specification:-

- ❖ **Output frequency: 27.12 MHz**
- ❖ **Wave length :11.062 meters**
- ❖ **Timer :0 to 30 min (Turns Off Power Predetermined time)**
- ❖ **Output Mode : Continuous / Pulsed)**
- ❖ **Output Power : Adjustable in 5 Steps**
 - for SWD 300W)
 - 0-1000W (for pulsed SWD)
- ❖ **Tuning Control : Smooth Control**
- ❖ **RF indicator : Available**
- ❖ **Note : Built I heavy duty cooling for long life of value**

17. Shortwave Diathermy 500W – with Disc Electrodes

MADE FOR MANKIND



Specification:-

- ❖ **Out put Frequency : 27.12 MHz**
- ❖ **Timer : 0 to 30 min (Turns off Power Predetermined time)**
- ❖ **Output Mode : Continuous / pulsed**
- ❖ **Output Power : Adjustable in 5 Steps**
 - **0-500W (for SWD 500W)**
 - **0-1000W(for pulsed SWD)**
- ❖ **Tuning Control : Smooth Control**
- ❖ **RF indicator : Available**
- ❖ **Note : Built I heavy duty cooling for long life of value**
 - **With Disc Electrode**

SLIMMING EQUIPMENT

18. Computerized Muscle Exerciser (1211E)



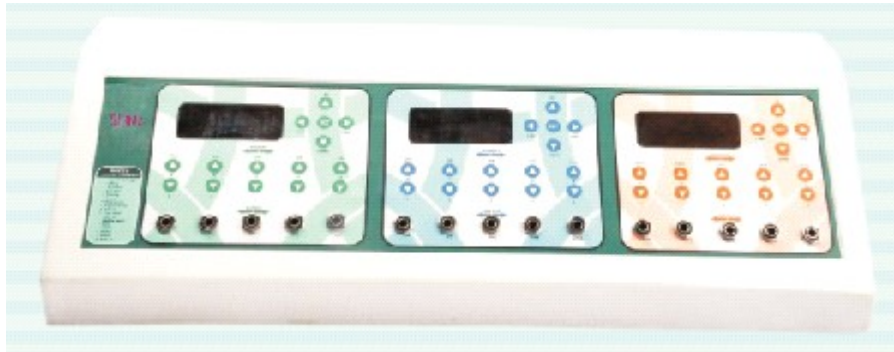
Specification:-

- ❖ **Microcomputer controller digital unit**
- ❖ **10 Channel 20 Pads**
- ❖ **10 Different Modes**
 - **Lifting, Inch loss, Fat loss, Firming, Toning, Reshaping, Figure correction, Tapping, Pain relief, Auto all**

- ❖ **Each channel have separate intensity control**
- ❖ **Easy Upgradable version for increasing the features of Equipment**
- ❖ **You can use two different part (or) different client same time**



19. Computerized Muscle Exerciser (006E)



Specification:-

- ❖ **Micro computer controller digital unit**
- ❖ **10 Channel 20 Pads**
- ❖ **10 Different Modes**
 - **Lifting, Inch loss, Fat loss, Firming, Toning, Reshaping, Figure correction, Tapping, Pain relief, Auto all, Burst, 200Hz, 600Hz, 800Hz, Auto all.**
- ❖ **Selectable Frequency and treatment time**
- ❖ **LCD display**
- ❖ **Easy Upgradable version for increasing the features of equipment**
- ❖ **You can use three different part (or) different client same time**

20. Interferential Stimulator (IFT 009)



Specification:-

- ❖ **Microcomputer controller digital unit**
- ❖ **4 Channel 16 pads**
- ❖ **Interferential vector 4000Hz, Russian 2500Hz**
- ❖ **LCD display**

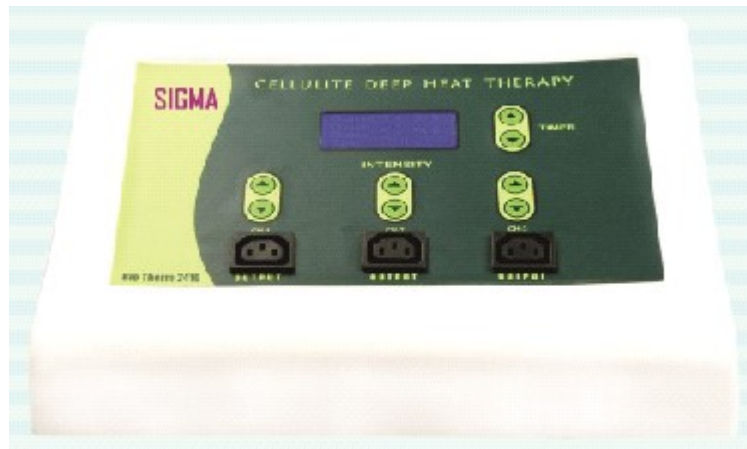
21. Cellulite Deep Heat Therapy (Therm 2410)



Specification:-

- ❖ **Microcomputer controller digital unit**
- ❖ **3 channel, LCD display**
- ❖ **Maximum temperature level 52sC**
- ❖ **Auto cut off on high temperature**
- ❖ **Using three different size pads provide thermal energy for your require area of body**

21. Cellulite Deep Heat Therapy (Therm 2410)



Specification:-

- ❖ **Micro computer controller digital unit**
- ❖ **3 channel, LCD display**
- ❖ **Maximum temperature level 52sC**
- ❖ **Auto cut off on high temperature**
- ❖ **Using three different size pads provide thermal energy for your require area of body**

22. Manual Speech Trainer



Specification:-

- **Microcontroller Based**
- ❖ **Stereophonics Speech Trainer.**
- ❖ **Two separate microphone for left and Right channels.**
- ❖ **Separate amplifier for left. Right channels.**
- ❖ **Separate gain control for each channel to adjust VU level (speech level).**
- ❖ **Selectable Low Pass band pass and High Pass Filter for each Channel.**
- ❖ **Selectable Output (Only Left, Only Right, Left Right)**
- ❖ **stereo/Mono Switch**
- ❖ **(In mono position)**
- ❖ **One mic student so student can listen**
- ❖ **to himself as well as to teacher).**
- ❖ **Two Separate 5dB Calibrated attenuator for each Channels.**
- ❖ **Power source: works on 230 Volt AC to 12 Volt DC Supply.**
- ❖ **Light weight and compact.**

23. Digital Speech Trainer



Specification:-

- ❖ **Microcontroller Based**
- ❖ **Frequency-38 Khz to 42 Khz, Portable device,**
- ❖ **Stereophonics Speech Trainer.**
- ❖ **Two separate microphone for left and Right channels.**
- ❖ **Separate amplifier for left. Right channels.**
- ❖ **Separate gain control for each channel to adjust VU level (speech level).**
- ❖ **Selectable Low Pass band pass and High Pass Filter for each Channel.**
- ❖ **Selectable Output (Only Left, Only Right, Left Right)**
- ❖ **stereo/Mono Switch**
- ❖ **(In mono position)**
- ❖ **One mic student so student can listen**

- ❖ **To himself as well as to teacher).**
- ❖ **Two Separate 5dB Calibrated attenuator for each Channels.**
- ❖ **Power source: works on 230 Volt AC to 12 Volt DC Supply.**
- ❖ **Light weight and compact.**
 - **16x2 Character LCD Display with Back Light**
 -



24. Combo Interferential Therapy & Russian Current & Ultrasound 1 MHz



Specification:-

- ❖ **Microcontroller Based**
- ❖ **STM Microcontroller**
- ❖ **Medium frequency 2KHz, 4KHz, 6KHz, 8KHz and 10KHz**
- ❖ **RUSSION current (2500Hz sine wave)**
- ❖ **Multi vector (4 Type of Vectors)**
- ❖ **Separate display for CH1 and CH2**
- ❖ **LED Indicators for Stimulation to the Patient for CH1 and CH2**
- ❖ **TENS Mode**
- ❖ **Built-in Patient Safety Circuit**
- ❖ **Digital Treatment Timer**
- ❖ **Microcontroller Based**
- ❖ **PIC Microcontroller**
- ❖ **Digital O/P Meter**
- ❖ **Digital Treatment timer**

- ❖ **Five Different O/P Mode (1Cont. Pulsed 1:2, 1:4, 1:8, 1:16)**
- ❖ **Output Frequency 1 MHz**
- ❖ **Transducer and Patient Safety Circuit**
- ❖ **Compact Size**

25. Combo Interferential Therapy & Russian Current & MST



Specification:-

- ❖ **Microcontroller Based**
- ❖ **STM Microcontroller**
- ❖ **Medium frequency 2KHz, 4KHz, 6KHz, 8KHz and 10KHz**
- ❖ **RUSSION current (2500Hz sine wave)**
- ❖ **Multi vector (4 Type of Vectors)**
- ❖ **Separate display for CH1 and CH2**

- ❖ **LED Indicators for Stimulation to the Patient for CH1 and CH2**
- ❖ **TENS Mode**
- ❖ **Built-in Patient Safety Circuit**
- ❖ **Digital Treatment Timer**
- ❖ **Therapy mode: G, IG, F, & SF**
- ❖ **Pulse duration: 0.01, 0.03, 0.1, 0.3,1, 3,10,100**
- ❖ **Pulse Rest Time: 1-6 sec**
- ❖ **Visual Indicator: G, IG, F, & SF**
- ❖ **Faradic Frequency:50Hz/0.7m sec**
- ❖ **Surge Duration:1-6 sec**
- ❖ **Surge Rest Time: 16 sec**



26. Combo Ultrasound 1 MHz & MST & Tens

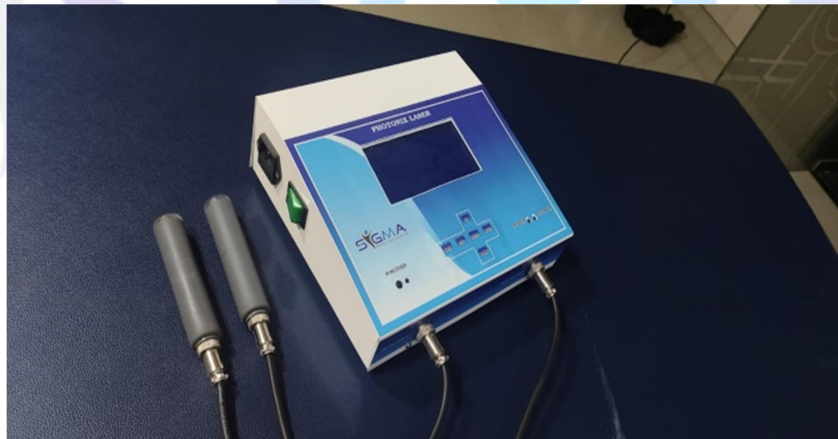


Specification:-

- ❖ **Microcontroller Based**
- ❖ **PIC Microcontroller**
- ❖ **Digital O/P Meter**
- ❖ **Digital Treatment timer**
- ❖ **Five Different O/P Mode (1Cont. Pulsed 1:2, 1:4, 1:8, 1:16)**
- ❖ **Output Frequency 1 MHz**
- ❖ **Transducer and Patient Safety Circuit**
- ❖ **Compact Size**
- ❖ **Therapy mode: G, IG, F, & SF**
- ❖ **Pulse duration: 0.01, 0.03, 0.1, 0.3,1, 3,10,100**
- ❖ **Pulse Rest Time: 1-6 sec**
- ❖ **Visual Indicator: G, IG, F, & SF**
- ❖ **Faradic Frequency:50Hz/0.7m sec**

- ❖ **Surge Duration:1-6 sec**
- ❖ **Surge Rest Time: 16 sec**
- ❖ **Power supply: SMPS ,100-275AC/50Hz operating range**
- ❖ **Available in with Battery (1 Hour Backup) & Without Battery**
- ❖ **Frequency : up to 150 Hz**
- ❖ **Pulse width : 400 Micro seconds**
- ❖ **Continuous/Burst Mode**
- ❖ **Digital timer 1 to 15 minutes adjustable**
 - **SMPS Power Supply @ 100V – 275V AC, 50Hz**

27. LASSER THERAPY



Specification:-

- ❖ **Safe & Effective Laser Therapy**
- ❖ **The Winlase - Laser technology is based on the**
- ❖ **proven principle of High Intensity laser therapy.**
- ❖ **Winlase Laser device is portable, touch screen**
- ❖ **operated and equipped with therapy protocols**
- ❖ **for easy and effective operation. The Winlase**
- ❖ **Laser brings you the most up-to-date treatment**
- ❖ **methods with a large screen based user friendly**
- ❖ **interface and selection of useful clinical**
- ❖ **indications, a logical control system that**
- ❖ **simplifies treatment choices, and two different**
- ❖ **appli**
- ❖ **Features**
 - **Auto detection of attached applicator**
 - **Delivered Energy – Max 100 Joules.**
 - **User can save more than 50 treatments.**
 - **Emission modes: Continues; Pulsed and**
- ❖ **Sweep;**
 - **Modes: Manual Mode, Predefined set of**
- ❖ **Protocols (8 set of protocol)**
 - **Safety goggle is provided having OD**
(Optical Density) = 4+ (800 - 2000nm)

28. LYMPH EDEMA COMPRESSION PUMP



Specification:-

- ❖ **Air pressure pneumatic compression DVT pump therapy digital with 2 LEGS**
- ❖ **1 waist and 1 Arm attachment (sleeves) eight (eight) chamber DVD pump systems remote controlled**
- ❖ **Pneumatic compression therapy with a pair of leg extensions (can be used if the patient lag size is greater than the usual sleeve size**
- ❖ **sigma Medicare systems forever sports recovery**
- ❖ **air pressure pneumatic compression device characteristics**
- ❖ **three various massage modes increase the therapeutic effect**
- ❖ **adjustable pressure levels ranging from 30-250 mmhg might be selected for maximum comfort**
- ❖ **skip care and intensive care functions could be chosen individually**
- ❖ **adjustable timer ;10,20,30,40,50,60minutes**
- ❖ **some of the features include air compression massage and an LED touch panel**
- ❖ **applications include athletic recovery pain relief and lymph edema**
- ❖ **by sigma Medicare systems DVD prevention for sedentary lifestyles**
- ❖ **Therapeutic device for leg recovery portable ari circulation pump for home**
- ❖ **Digital compression therapy for legs comprehensive venous health**
- ❖ **Solution adjustable pressure therapy for lags**

**29. Wax Bath 1Kg, 3Kg, 5Kg, 15Kg,
30Kg**



Specification:-

- **Filament** : “M” Type
- **Thermostat** : Deluxe Model
- **Power Indicator** : Available
- **Thermostat Indicator** : Available
- **Safety fuse** : Provided
- **Thermostat control** : 1 - 100 C

30 Cryo Cold Therapy Motorized



Model Name: sigma Cryo Cold Therapy Motorized

Key Features:

- Cooler unit with motor
- Motorized
- With 4 attachments: **Shoulder, Ankle, Knee, Back/Hip**

Technical Specs (Attachments):

- **Shoulder Size:** 965 × 465 mm
Weight: 255 g
- **Ankle Size:** 725 × 375 mm
Weight: 267 g

SIGMAMEDICARESYSTEMS

Gmail: sigmamedicareystems@gmail.com

- **Knee Size:** 725 × 375 mm
Weight: 770 g
- **Back/Hip Size:** 1220 × 305 mm
Weight: 284 g

TERMS & CONDITIONS:

1. **Packaging Charges** : At our cost
2. **Forwarding Charges** : At your cost
3. **Mode of Payment** : 100% Advance with Firm order
4. **Delivery time** : Within four weeks
5. **Guarantee** : 12 Months from the date of supply
(Warranty is not applicable for the accessories and Valve)
6. **Jurisdiction** : Chennai city only
7. **Taxes** : Extra 12% and local taxes if any extra

Our Bank Details

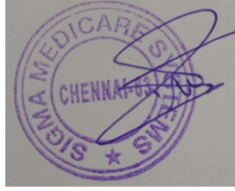
- Account Name** : Sigma Medicare Systems
Name of the bank : HDFC Bank
Account no : **50200059559541**
Branch : West Mambalam

SIGMAMEDICARESYSTEMS

Gmail: sigmamedicareystems@gmail.com

Bank IFSC code : HDFC0000575

Yours truly,



(M.Senthil Kumaran)

