

# PHYSIO THERAPY

**EQUIPMENT  
MANUFACTURER**

Gmail:[sigmamedicaresystems@gmail.com](mailto:sigmamedicaresystems@gmail.com)

PH:9176282421,9498082830,044-48652421



## SIGMA MEDICARE SYSTEMS

No 9/1Kampar Salami Kulakkarai North Street .Ramapuram, Chennai-600089

E-Mail: [sigmamedicareystems@gmail.com](mailto:sigmamedicareystems@gmail.com)

Web: [www.sigmamedicareystems.com](http://www.sigmamedicareystems.com)

PH: +91-44-48652421, 91-0-9176282421, 9498082830

# EXERCISE THERAPY

## 1 Manual Drop Table

### Adjustable Headpiece

Headpiece is adjustable for provide comfort head rest.



### Pressing Switch

Easy to load a drop by just pressing a switch



### I Grade Equipment

It has been built, tested, and certified to operate safely near patients.



### Ankle Support

Adjustable Ankle support to move according the need



### Adjustable

Fully adjustable arm resting handles



### Mova

with breaking mechanism



### Adjustable Height

All treatment is done at different height so we provide table height is easily adjustable by foot paddle from 12 inch to 32 inch

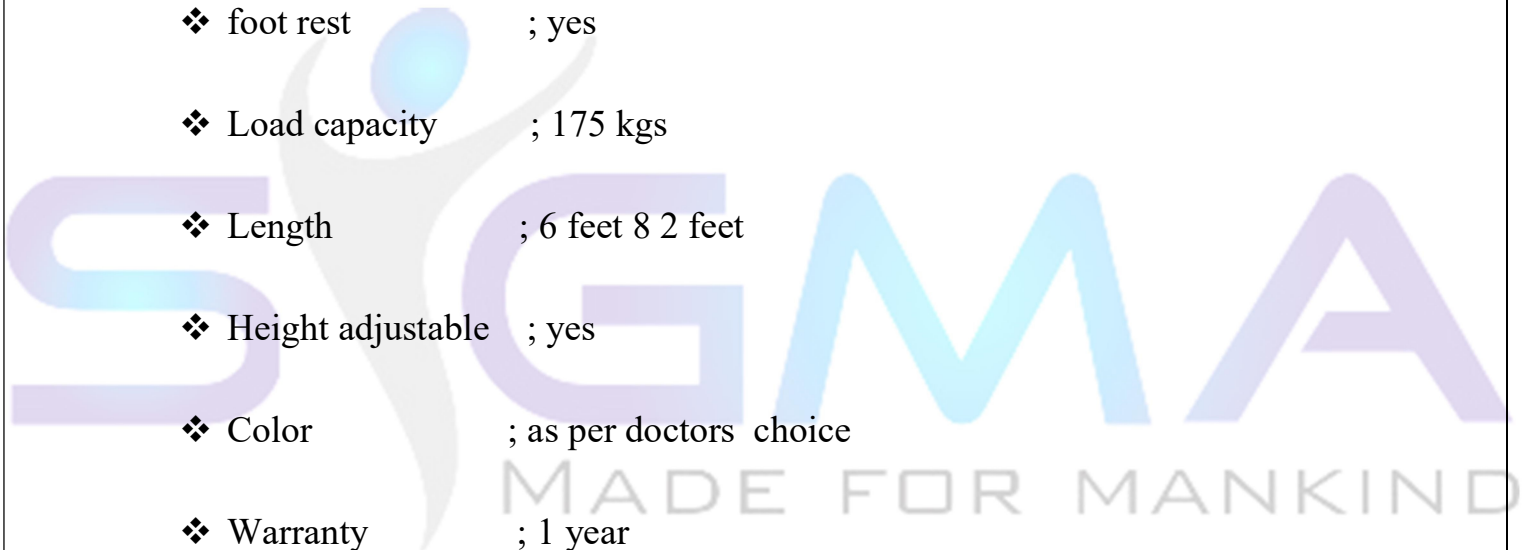


Easy to load a repetitive drop & table height adjustment by using foot press switch



# **SPECIFICATIONS**

- ❖ Net weight ; 185kg
- ❖ Material ; powder cotted mild steel
- ❖ Shope ; Rectangal
- ❖ usage / application ; hospital & clinics
- ❖ foot rest ; yes
- ❖ Load capacity ; 175 kgs
- ❖ Length ; 6 feet 8 2 feet
- ❖ Height adjustable ; yes
- ❖ Color ; as per doctors choice
- ❖ Warranty ; 1 year
- ❖ Height ; down height 12 inch ,up height 32 inch



## Touch Display

provides effortless command and real-time monitoring



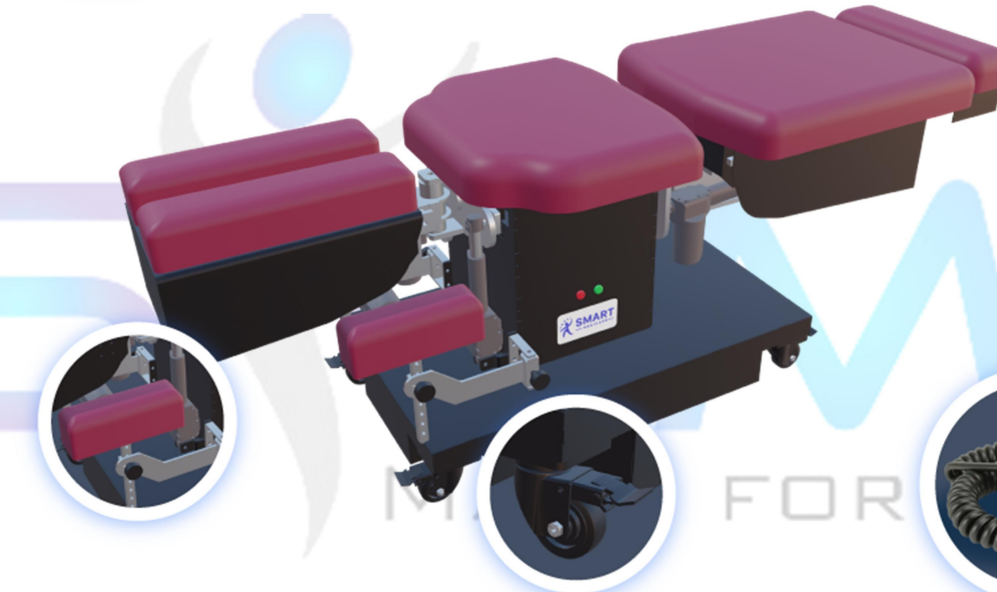
## Leg Rest Cushion

for patient legs comfort

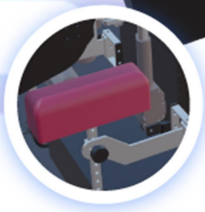


## Traction Belting system

that enhance restraint for optimal decompression



for patient hands comfort  
**Hand rest**



## Emergency Switch

for patient safety



- **Material:**
  - **Shape: Rectangle**
  - **Usage/Application: Hospitals & Clinics**
  - **Foot Rest: YES**
  - **Height Adjustable: YES**  
(Down 22 Inch, Up 32 Inch)
  - **Warranty: 1 YEAR**
  - **Hydraulic Lift: YES**
  - **Number Of Wheels: 4**
  - **Color: As per Client Choice** (30+ options)
  - **Delivery Time: 30 Days**
  - **Knee Pillow**
  - **Decompression Belting Set (Lumbar/Thoracic)**
    - **Cervical Belt**
  - **Easy Fastening Buckle**
  - **Tissue Paper Attachment**
  - **Flexion Belt**
  - **Cervical Headpiece**
- 

## **1. Motorized Treatment Table**



## **Specification:-**

- ❖ **1 - motor adjustable**
  - **Treatment table**
- ❖ **Height adjustment - 2 feet to 3 feet**
- ❖ **Cervical adjustment (- 10 degrees to 60 degrees)**
- ❖ **Lumber - adjustment (0 to 70 degrees)**
- ❖ **Fixed thoracic position**
- ❖ **Shoulder adjustment position with depending**

## **2. Finger Ladder**



## **Specification:-**

- ❖ Shoulder Abduction Ladder –
- ❖ Ladder mad of polished hard Wood having thirty numbered Steps for Shoulder abduction exercises.
- ❖ Unit Size: 70 cm wide x 6 cm deepx300 cm height.

## **3.Armer Exerciser**



## **4. Wall Bar Ladder**



## **5. Traction Table**



## **Specification:-**

- ❖ **Total Length – 8 feet**
- ❖ **Height – 2½ feet**
- ❖ **Width – 2 feet**
- ❖ **Bed Length - 6½ feet**
- ❖ **Movable Bed portion length-3½ft**
- ❖ **Fixed Bed portion length – 3 feet**
- ❖ **Machine fixing stand height can be adjusted**
- ❖ **Total weight – 30 kg**

### **6.A. Traction Table 4 folding**





## **Specification:-**

- ❖ **Total Length – 8 feet**
- ❖ **Height – 2 feet**
- ❖ **Width – 2 feet**
- ❖ **Bed Length - 7 feet**
- ❖ **Movable Bed portion length-3½ft**
- ❖ **Fixed Bed portion length – 3 feet**
- ❖ **Machine fixing stand height can be adjusted**
- ❖ **Cervical adjustment (- 10 degrees to 60 degrees)**
- ❖ **Lumber -1 adjustment(0 to 70 degrees)**
- ❖ **Lumber -2 adjustment ( 0 to 45 degrees )**
- ❖ **Total weight – 35 kg**

## **6. B. Spinal- de- compression table**



## **Specification:-**

- ❖ **4 - motor adjustable  
Traction table**
- ❖ **Height adjustment - 2 feet to 3 feet**
- ❖ **Cervical adjustment with motor (- 10  
degrees to 60 degrees**
- ❖ **Lumber -1 adjustment with motor (0 to  
70 degrees)**
- ❖ **Lumber -2 adjustment with motor ( 0 to  
45 degrees )**
- ❖ **Fixed thoracic position**
- ❖ **Shoulder adjustment position with  
depending**
- ❖ **Hand rest position with on opposite  
position**
- ❖ **Traction moment for 3 to 4 inches**
- ❖

## **7. Treatment Table Rack**



### **Specification:-**

- ❖ **Total Length – 6 feet**
- ❖ **Height – 2.5 feet**
- ❖ **Width – 2 feet**

## **8. Treatment Table**



### **Specification:-**

- ❖ **Treatment Table :**
- ❖ **Under able guidance of our skilled professionals we offer treatment table(Examination Table)**
- ❖ **Features and Uses:**
- ❖ **This Table Is Manufactured With Thick and hard iron with Powder Coating and Cushioned Top.**
- ❖ **The Table is Less Expensive and has Prolonged Life Duration.**
- ❖ **The Patients are made to lie on this table to Examine Them**
- ❖ **It Is available in Size of 78 ”(2000mm)length**
- ❖ **30” (750 mm)breadth,**
- ❖ **30” (750 mm) height ,**
- ❖ **Cushion Thickness is 90m**

## **9. Staircase Corner**



### **Specification:-**

- ❖ **Total Length – 6 feet**
- ❖ **Height – 2.5 feet**
- ❖ **Width – 2 feet**

## **10. Staircase straight**



### **Specification:-**

- ❖ Staircase with Incline straight Model is ideal for use in physical therapy and rehabilitation centers. Rigid engineering and
- ❖ construction provide a safe training apparatus as well as a weight capacity of 350 lbs. Staircase with Incline straight
- ❖ Model features handrails and uprights made from satin-finished premium hardwood for lasting durability. The satin-finished premium hardwood is ergonomically designed for a safe, comfort
- ❖ table grip.

- ❖ Staircase with Incline straight Model uses four six inch high steps
- ❖ and a platform enclosed by handrails for user safety and accessibility. Each of the four stairs as well as the 24 inch high platform are finished in Natural Oak Laminate and covered
- ❖ With anti –slip treads for enhanced Traction .Staircase  
With
- ❖ Incline Straight Model requires a minimum ceiling height of
  - ❖ 4.5 feet.
  - ❖ Oneside steps 6 inches height
  - ❖ Anotherinclain
  - ❖ Total Length 11.5 feet

## **11. Corner seat**



## **12. Crubs & Ramp**



### **Specification:-**

- ❖ Total Length – 6 feet
- ❖ Height – 2 feet
- ❖ Width – 2 feet

## **13. Peg Board**



**PEG BOARD  
(Different Shapes and Size)**

**L : 16 Inh W : 16 Inh H : 4 Inh**

## **14. Tilting Table (Manul)**



MADE FOR MANKIND



## **Specification:-**

- ❖ We are engaged in manufacturing and exporting a wide range of
- ❖ Tilting Table manual
- ❖ The Tilt Tables Manual offered by us are manufactured using
- ❖ advanced machines
- ❖ and superior quality raw material as per the set industry
- ❖ standards and norms
- ❖ Moreover the Tilt Tables offered in Various Specification to meet

- ❖ **Variegated Requirments Of our clients The Tilt Table Deluxe**
- ❖ **Pictured above s of**
- ❖ **Bed Size 78 inches length ,24 inches breadth ,**
- ❖ **Height 29 inches,**
- ❖ **0 to 90 Degree Tilting facility,**
- ❖ **5 inches High Quality Wheel with Two Break**

## **15.Tilting Table motrorised**



## **Specification:-**

- ❖ We are engaged in manufacturing and exporting a wide range of Tilting Table motorized
- ❖ The Tilt Tables Motorized offered by us are manufactured using advanced machines
- ❖ and superior quality raw material as per the set industry standards and norms
- ❖ Moreover the Tilt Tables offered in Various Specification to meet
- ❖ Variegated Requirments Of our clients The Tilt Table Deluxe Pictured above s of
- ❖ Bed Size 78 inches length ,24 inches breadth ,
- ❖ Height 29 inches,
- ❖ 0 to 90 Degree Tilting facility,
- ❖ 5 inches High Quality Wheel with Two Break
- ❖ Aculator 230 V 300 mm choke

## **16. Massage Table**



## **17. Parallel Bar 10feet**



### **Specification:-**

- ❖ **Total Length – 6 feet**
- ❖ **Height – 2 feet Adjustable**
- ❖ **Width – 2 feet**

## **18. Mirror stand**



## **19. Double Step Stool**



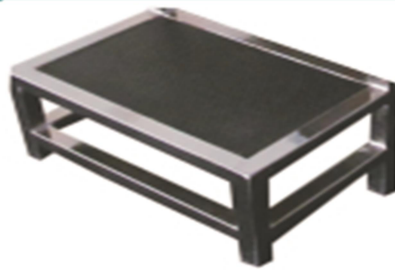
**DOUBLE STEP STOOL**

**L : 15 Inh W : 9 Inh H : 14 Inh**

### **Specification:-**

- ❖ **Total Length – 15 inch**
- ❖ **Height – 14 inch**
- ❖ **Width – 9 inch**

## **20. Single Step Stool**



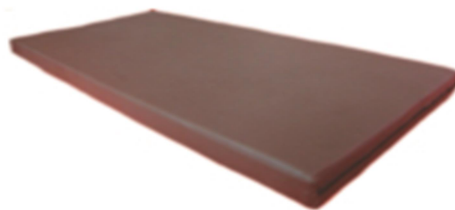
**SINGLE STEP STOOL**

**L : 15 Inh W : 9 Inh H : 8 Inh**

### **Specification:-**

- ❖ **Total Length – 15 inch**
- ❖ **Height – 8 inch**
- ❖ **Width – 9 inch**

## **21. Activity Mattress**



**ACTIVITY MATTRESS**

**L : 7.5 Inh W : 4 Inh H : ½ Inh**

## **Specification:-**

- ❖ **Total Length – 7.5 inch**
- ❖ **Height – ½ inch**
- ❖ **Width – 4 inch**

## **22. Wedges**



## **Specification:-**

- ❖ **Total Length – 30 inch**
- ❖ **Height – 3 to 12 inch**
- ❖ **Width – 18 inch**

## **23. Inclined Mattress**



### **Specification:-**

- ❖ Total Length – 180 cm
- ❖ Height – 10 to 40 cm
- ❖ Width – 90 cm

## **24. Balance Board**



## **Specification:-**

- ❖ **Total Length – 22 inch**
- ❖ **Height – 6 inch**
- ❖ **Width – 16 inch**

## **25.Suspension Therapy**



## **Specification:-**

- ❖ **Total Length – 6 feet**
- ❖ **Height – 6 feet**
- ❖ **Width – 2.5 feet**

## **26.A .Suspension Therapy Delux**



### **Specification:-**

- ❖ **Total Length – 6 feet**
- ❖ **Height – 6 feet**
- ❖ **Width – 2.5 feet**

## **27. Quadriceps Table with Back rest**



## **28. A. Quadriceps Table with Back rest Deluxe**



## **29. Shoulder Exercise with Supinator & Pronator**



**SHOULDER EXERCISE WITH SUPINATOR & PRONATOR**

---

## **30. Trampoline**



**TRAMPOLINE**

---

## **31. Bolster**



## **32. CP Chair With Standing frame**



## **33. Shoulder Wheel Wood**

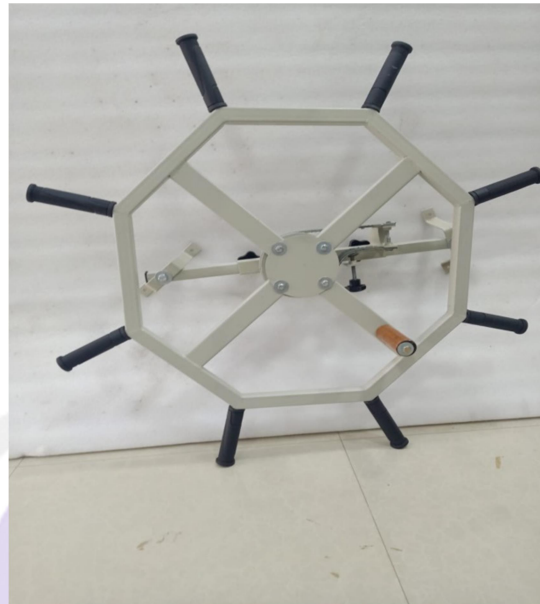


**SHOULDER WHEEL WOOD**

### **Specification:-**

- ❖ **Shoulder Abduction shoulder wheel –**
- ❖ **mad of polisher hard wooden having thirty numbered Steps for Shoulder abduction exercises.**
- ❖ **Unit Size: 35 inch round**
- ❖ **8 number handle**

## **34. Shoulder Wheel MS**



### **Specification:-**

- ❖ **Shoulder Abduction shoulder wheel –**
- ❖ **mad of polished hard ms metal having thirty numbered Steps for Shoulder abduction exercises.**
- ❖ **Unit Size: 35 inch round**
- ❖ **8 number handle**



## **37. Nirmal Hand Exercise**



## **38. Standing Frame**

MADE FOR MANKIND



## **39. Wrist Circumductor**



## **40. Finger Exerciser**



**FINGER EXERCISER**

---

## **41. PED-O-Cycle**



**PED-O-CYCLE**

---

## **42. Instrument – Trolley**



**43. Ankle Exercise**



**44. Un-weighting systems**



## **Specification:-**

- ❖ **Can Lift Patient Weight Up to 200 Kg .With Remote Control and noiseless imported Motor.**
- ❖ **Digital Display of Patient Weight during Treatment.**
- ❖ **It Reduces Supporting Weight of Lower Limb and Waist as per need of Patients through Motor Control and guarantee walking and training safety.**
- ❖ **Castor that allows easy mobility of the systems during gait training.**
- ❖ **Height and width Adjustable Handrails that allows patient assistance During Gait Training.**
- ❖ **360 Degree Free Rotation of Patient can be done for Treatment.**
- ❖ **Power Supply :210-230 VAC 50Hz**
- ❖ **Fuse Rating :3A+10 %**

- ❖ Max Power Consumption :20W
- ❖ Safety Standard
- ❖ Safety Standard
- ❖ Electrical and Functional Safety Test Certified.

## **45. Multipurpose exerciser**



### **Specification:-**

- ❖ Gripping handles during routine shoulder pulley
  - Overhead pulley exercise causes overflow of muscle tension into the shoulder
- ❖ limiting exerciser effectiveness.pil-Ez with its patented grip – free hold and pillow – soft foam wrist –support system
  - Help eliminate this overflow, translating into more effective exercise.
- ❖ Appropriate for orthopaedic patients as well as the neurologically impaired
  - included is a comprehensive patient exercise guide with extensive exercise options

❖ a custom nylon – roller and a compact

## **46. Cp walker**



**47.  
machine**

**Rowing**



**48. Traction table with rack**



## **Specification:-**

- ❖ Total Length – 6 feet
- ❖ Height – 2.5 feet
- ❖ Width – 2 feet

**49.Overhead pulley**

MADE FOR MANKIND



## **50. Scooter Board Paediatric**



## **51. Walker**



**52. Dr.Manual Apparatus**

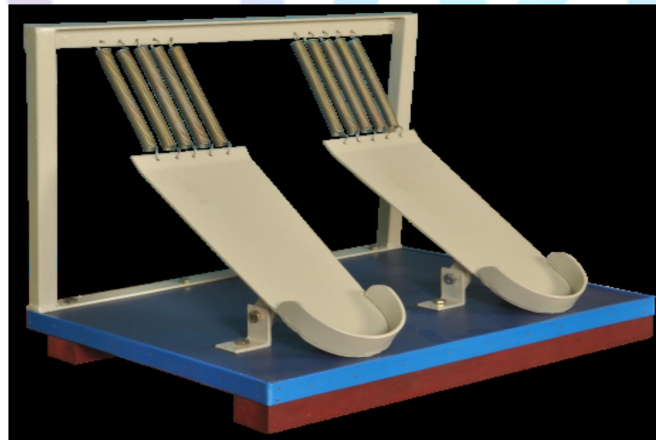


**53. Heal**

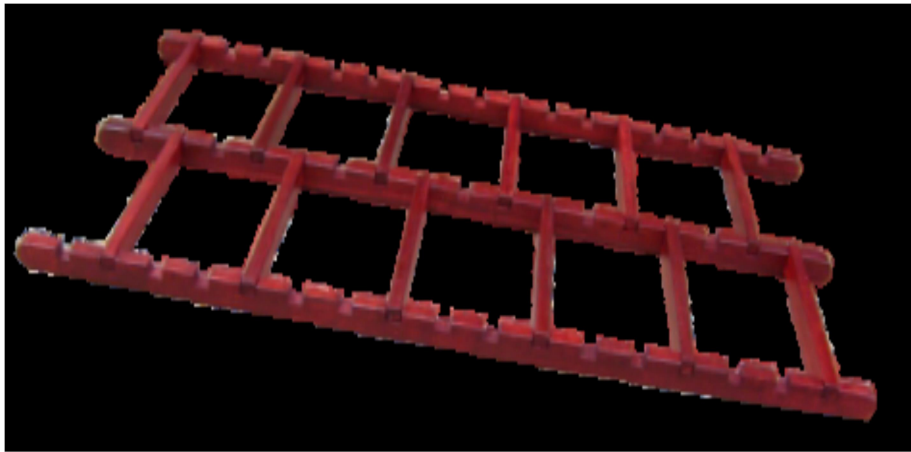
**Exerciser**



## **54. Twin Ankle Exerciser**



## **55. Foot Placement Ladder**



**56. Movable Stool Round type**



## **57. Static Cycle**



## **58. Bean Bag**



### **Specification:-**

- ❖ Provide customized, semi-permanent positioning when temporary positioning is needed. Bags are filled with styrene beads which
- ❖ mold to the child's body shape. Can be used to accommodate structural deformities and is also appropriate for temporary posture correction. Set of Three sizes;
- ❖ Small, Medium, and large in different colours.

## **59. Cp Chair**



## **60. INSTRUMENT TROLLEY 2 STEPS**



## **70. INSTRUMENT TROLLY 3 STEPS**



MADE FOR MANKIND

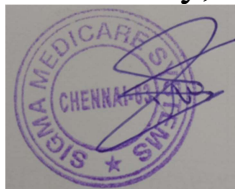
## **TERMS & CONDITIONS:**

- 1. Packaging Charges : At our cost**
- 2. Forwarding Charges : At your cost**
- 3. Mode of Payment : 100% Advance with Firm order**
- 4. Delivery time : Within four weeks**
- 5. Guarantee : 12 Months from the date of supply  
(Warranty is not applicable for the accessories and Valve)**
- 6. Jurisdiction : Chennai city only**
- 7. Taxes : Extra12% and local taxes if any extra**

### **Our Bank Details**

**Account Name : Sigma Medicare Systems**  
**Name of the bank : HDFC Bank**  
**Account no : 50200059559541**  
**Branch : West Mambalam**  
**Bank IFSC code : HDFC0000575**

Yours truly,



(M.Senthil Kumaran)